

UNRESERVED

ATCON CONSTRUCTION INC. *et al* (IN RECEIVERSHIP)
AS AWARDED BY ERNST & YOUNG INC.

AUCTION



1998 Cat 988F Series II

THURSDAY, NOV. 18th 2010 @ 9:00 AM (Atlantic Time)
NEWCASTLE LIONS CLUB HALL, MORRISON LANE
MIRAMICHI, NEW BRUNSWICK, CANADA



Asset Sales (Canada) Inc.

auctioneers * appraisers * liquidators



HODGINS
AUCTIONEERS INC.

BidSpotter.com™
Live Interactive
Auction Webcasts!

www.asset-sales.com

www.hodginsauctioneers.com

ATCON CONSTRUCTION INC.



1985 JCI 500



1996 Sumitomo SC700



1985 IH F2674

CONSTRUCTION/MINING EQUIP.

1998 Cat 988F Series II Wheel Loader. s/n 2ZR01264.

1999 Cat 320BL Hydraulic Excavator s/n 6CR03820 w/ Saw Harvester Head.

1985 JCI 500 Scoop Tram. s/n RBLT61T4789.

CRAWLER CRANE

1996 Sumitomo SC700, 70 Ton, s/n SC070-00404 w/ 4 Hyd. Drive Drums c/w Approx 70' Boom and 40' Extension, 30" Pads, Hyd. Spread for Undercarriage, 1527 Hrs. on Clock.

AGGREGATE EQUIPMENT

2000 Trac Industries 54 Ft. Triple Axle Screen Deck Chassis. s/n TRAC1313-10-040-03.

Telsmith 57G-M Cone Crusher, s/n 02256, Mounted on Triple Axle Chassis.

Uniscreen Conveyor/Feeder s/n 331C1000S on S/A Carrier.

Trac Industries 60"x45 Ft. Conveyor on S/A Carrier.

Trac Industries 48"x 45 Ft. Conveyor Frame.

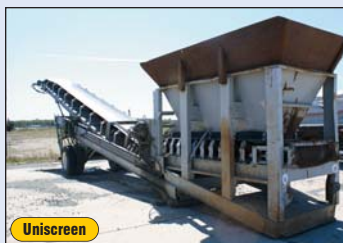
POWER VANS

1987 Freuhauf 48 Ft., T/A (s/n 2H8R04828113058501) c/w **Onan 600VFGD** 600 KW Genset

(s/n E980735930) p/w **1998 Cummins VTA-28-G5-E9685230** V8 D. Eng. (s/n 25233909), Single and 3-Phase Power, also c/w **Onan 35DGBB** (s/n B980696551) 35 KW 347/600 Volt Genset p/w **Cummins** 4-Cyl. D. Eng., c/w Steel Entrance Steps, Misc., Elec. Cord.



Telsmith 57G-M



Uniscreen



1989 Western Star 4964F



Trac Industries Conveyor

1980 Temisko 8640, 26', S/A w/ Samsung 600 Volt, 3-Phase Gen Set (s/n 8056-1) p/w Detroit V12 Eng., (disassembled, for parts).

FORK LIFTS

Cat V60B.

Cat GP30 (for parts).

GEN SET

1997 Cat 3306, s/n 9NR02023, 263 KVA, 210 KW on Skids.

PORTABLE AIR COMPRESSORS

Leroi 900, s/n 385X26900CFM.

1990 Atlas Copco XAS85 s/n 976534.

1990 Atlas Copco s/n ARP923511.

STATIONARY AIR COMPRESSOR

Sullair Sulliscrew LG-75H s/n 45165-KGH.

LIGHT PLANTS

TWO, Amida AL4000, **THREE, 2005 Ingersol Rand Lightsource.**

TRUCK TRACTOR

1989 Western Star 4964F s/n 2WKPDCC6KK925214.

CRANE TRUCK

1985 IH F2674 T/A s/n 1HTZVJMR8FHA42052 c/w **National Crane 800B** s/n 1652.

OTHER TRUCKS

IH S1900 T/A Log Loader w/ Log Loader Boom.

Ford 9000 S/A (for parts).

TRUCK SCALES

Mettler Toledo Digital Truck Mate 11x40 Ft. w/ 6 Load Sensors (No Digital Read-out or Printer).

Mfg. Unknown 10x40 Ft. w/ 6 Load Sensors, (No Digital Read-out or Printer), **TWO Active Scale Mfg. IQ+39000**, 10x40 Ft. Sections w/ 6 Load Sensors per Section (No Digital Read-out or Printer).

1998 Canadian Scale EFDI3060P 9-1/2 x 60 Ft., 35K Kg Capacity s/n 98C078 (no load sensors, digital read-out or printer).

TWO, Mettler Toledo Digital Truck Mate, 75 Ton 35 Ft. Truck Scale Sections c/w Frames w/ Cement Landing Pads (No Load Sensors, Digital Read-outs or Printers).

LOWBED TRAILERS

Trail-King Model 1K100DG473, 60 Ton, s/n 1TKH04739KM033576.

Janco Lowbed Mini Home Trailer s/n 0412890000003581.

DWS Ez-2-Load 25 Ton Tilt Flatdeck.

GRAVEL TRAILERS

TWO, 2000 Midland 24' T/A End Dump Gravel Trailers.

1998 & 1997 Trac Tridem Belly Dump Gravel Trailers.

HIBOY TRAILERS

1999 BWS 48 Ft., **1997 Wilson** 48 Ft., **Mfg. Unk.** 40 Ft., s/n 38012917, **Cancar 36'**.

EQUIPMENT PREVIEWING

Nov. 16 & 17, 10:00 am to 4:00 pm

IMPORTANT NOTE:

The equipment is located at numerous sites in Miramichi.

An "Equipment by Location" listing, along with a location by location viewing schedule will be available prior to the viewing dates.



Active Scale Mfg. IQ+39000



Trail-King Model 1K100DG473



Janco



2000 Midland



1998 & 1997 Trac Tridem



1998 Stoughton

VAN TRAILERS

Fruehauf 48 Ft. T/A Office Lunchroom Trailer, **1998 Stoughton** 8-1/2 Ft.x53 Ft. T/A Site Office Unit, **1996 Great Dane 7241TZ-1** 53' Construction Trailer, **1989 Mond** 48 Ft., T/A. **1989 Fruehauf B8-F2W-48-96-ST** 48 Ft., T/A Site Trailer, Office, Lunch Room, **1987 Fruehauf** 48 Ft. T/A Site Trailer, **1984 Fruehauf** 40' Triple Axle Shop Trailer, **Dell Unicell** 13' Van Body.

UTILITY TRAILERS

2005 Duratrail DD016TA 8x16 Ft. Flat Deck Trailer.
2001 Continental Cargo 12' S/A Enclosed Cargo Trailer.
2006 Continental Cargo 18' T/A Enclosed Cargo Trailer.

PICKUPS

2006 Chev 1500LS 4x4 Long Box.
2005 Ford F350 XL Super Duty Crew Cab Dually Service Truck.
 TWO, **2005 Chev 3500 Silverado** Crew Cab 4x4 Long Box.
 FIVE, **2005 Chev 2500HD Silverado** Reg. cab, Long Box.
2004 Ford F150 XLT Ext. Cab, Short Box.
2004 Chev 3500 Silverado 4x4 Crew Cab Long Box.
2004 Ford F150 XL Ext Cab 4-Dr.
2003 Ford F150 XLT 4x4 Short Box Step Side, Ext. Cab.
2003 Chev LS Silverado 4x4, 4-Dr. Ext. Cab.
2003 Chev 3500 Silverado 4x4 Reg. Cab w/ Space Cap Plus Service Cap.
2003 Ford Windstar LX Minivan.
1997 Chev 2500 Savana Cargo Van (for parts).

CAMP EQUIPMENT (on skids)

Kencraft 15x68 Ft. Kitchen/Dining Room Combination.
Kencraft 12x48 Ft. Kitchen Unit.
 FIVE, **Kencraft** 12x48 Ft. 8-Man, 4-Room Camp Units w/ Centre Bath.
 TWO, **Kencraft** 16x72 Ft. Dormitory/Office Units.
Kent Construction 12x50 Ft. Bunk House, 5-Room, 10-Man w/ Bathroom
Mfg. Unk. 12x50 Ft. Kitchen Unit w/ No Appliances.
 TWO, **Shopbuilt** Unused, 8X20 Ft. Seacan Converted Bathroom Units.

CAMP EQUIPMENT (on chassis)

Kent Construction 12x40 Ft. Office Trailer w/ Bathroom, **Kent Construction** 12x50 Ft. Office Trailer.

OTHER EQUIPMENT

Ice 812 Vibratory Pile Hammer and Extractor c/w Enclosed **Ice 570** Power Unit (s/n 174018) w/ 475 HP. Cat V8 Eng.
Troxler 3450 CE Roadreader Plus, Moisture/Density Gauge.
Cat TH83 Telehandler, (parts only, no differential) s/n CAT0TH83K3RN04472.
MF 1805 4-WHL. Dr. Tractor.
Mfg. Unk. HD Chipper, s/n CH-25-01A. 40 Ft. Portable Forklift Ramp w/ Manual EnerPack Hyd. Raise & Lower.
Bynex SN100 Quick Attach Loader Mount Asphalt Control Spreader.
 Qty. of Cement Road Dividers, Qty. of Cat Excavator Parts, Qty. of Crawler or Excavator Rollers, Misc. Crawler Tracks, Big Ring Gear, Misc. Scrap Iron.
 SEVEN, Misc. Fiberglass Cap Tops, SIX, Long box, ONE, Short box.
 TWO Older Seacan Containers.
 TWO, **Frostfighter OHV350-2** and ONE, **Frostfighter OHV-500** Kerosene Fired Construction Heaters.

LIVE INTERNET BIDDING AVAILABLE!

BidSpotter.com
Live Interactive Auction Webcast!

A 16% Buyers Premium will Apply to All Internet Purchases

CONCRETE FORMS

Efco Concrete Forms, Approx. 200, Ass'd Sizes.
Efco Pier-Column Forms, Approx 80.
Mfg. Unk. Guard Rail/Barrier Forms, Approx. 65.

ATTACHMENTS

Forklift and Skid Steer Fork Extensions,
Cat 216-8756 Quick-Attach Skid Steer Bucket, Skid Steer Mount Lift Boom, Large Forklift or Loader Lifting Boom.
Cat H63 Skid Steer Mount Hyd. Jackhammer w/ Storage and Moving Plate.
Teledine TC150S Crane Mount Hyd. Tamper, s/n 3881698, Quick Attach Loader Hyd. Tilt Pallet Forks, 8 Ft. Truck-Mount Dozer Blade w/ Hyd. Angle, Loader Mount 6 Ft. Hyd. Dr. Sweeper w/ Skid Steer Mount, Quick Attach Cat 1-1/2 to 2 Yd. Bucket w/ Cutting Edge, TWO, **Aerometals** Crane-Style Concrete Buckets, **Garbar 4928** 5000 Lb. Forklift or Crane Style Concrete Bucket, s/n 05689C.
Mfg. Unk. Excavator Mount Hyd. Dr. Concrete Breaker w/ Steel Stand.
Craig 938G Quick Attach Log Grapple, **Cat 938G** Fork Lift Style Log Grapple, Quick Attach, 1-1/2 Yd. Bucket w/ Cutting Edge, Custom Build Loader Attach.
Craig EXB-DC 330 Excavator 72" Cleaning Bucket s/n 98080406, **Craig EXB-SS 330** 60" 2-1/2 Yd. Digging Bucket for Cat 330 Excavator, Quick Attach. s/n 98041706, **Craig 54"** Digging Bucket, to fit 330L Cat Excavator, Needs Repair. s/n 100806, 54" 2-1/2 Yd. Digging Bucket, to fit 330L Excavator, w/ Teeth.
 Approx. 5 Yd. Spade-Nose Loader Bucket w/ Teeth, Misc. Scraping Blade.
Trac Excavator-Mount Rock Scoop, Loader Style Forks, Quick Attach.
 Skid Steer Bucket, **Cat BA18** Skid Steer Mount 6 Ft. Sweeper w/ Hyd. Angle. s/n AZN00358, **Mfg. Unk.** Skid Steer Mount 6 Ft. Sweeper w/ Hyd. Angle. s/n BL.

MISCELLANEOUS ITEMS

Ideal 505 50P Shrink Wrap Machine s/n M9509320 w/ 48x8 Ft. Infeed Conveyor & Heat Tunnel.

AUCTION TERMS

- All payments must be made by Cash or Certified Cheque, Cheques should be made payable to Hodgins Auctioneers Inc. Personal or Company Cheques are acceptable only if they have a letter of Guarantee from your bank, otherwise no purchases may be removed until cheques have cleared financial institutions. Purchases under \$10,000.00 must be paid in full on the day of the Sale. For any Major lot as Determined by the Auctioneer, the purchaser shall pay a deposit on Acceptance of his Bid, the Greater of 25% of the purchase price or \$10,000.00 on the day of the Sale, and the balance of the purchase price within seven (7) days of the termination of the Auction. No Purchases may be removed until paid in full.
- A 13% Buyer's Premium will be Charged on all Onsite Purchases.
- A 16% Buyer's Premium will Apply to All Online Purchases.
- HST of 13% will be Charged on all Purchases.
- All Property is Sold "AS IS, WHERE IS". The Auctioneers and the Seller disclaim all warranties, expressed or implied, about the merchantability of the items or their fitness for a particular purchase.
- All Sales are final.
- The buyer shall be solely responsible for load-out. The Auctioneers will assist with load-out at their discretion.
- Other Terms and Conditions as Announced by Auctioneer and/or Posted at the Auction Site.

10x12 Ft. Power Shack w/ Converter, Switch Panel, Pressure Pump.
 Rigid Pipe Stands, Pipe Cutters, Submersible Pumps, Qty. of Pipe Fittings, Hoses, Slings, Harness, etc., Qty. of Cable, some on Reels, Qty. of Crane Counter Weights, Large Qty. of Pallets of Cinderblocks, 20 HP **Honda** Hyd. Power Pack w/ Elec Start Misc. Hyd. Jacks & Porta Powers, Oxyacetylene Cart & Gauges, Torches, etc., Steel Shelving Unit w/ Misc. Elec Motors, Drives, Pumps, Pneumatic Cyl., Misc. Cutting Blades, King Parts



Kencraft



Portable Forklift Ramp



2006 Chev 1500LS



2005 Ford F350 XL Super Duty



2003 Ford F150 XLT



Frostfighter OHV350-2 and OHV-500

MIRAMICHI, NB, CANADA

Washer, Large Qty. of Nuts & Bolts, Steel Work Bench, Tool Box w/ Qty. of Misc Tool Sets.

Lincoln Ranger 250 Gas Pwr. Portable Welder w/ Helmets, Cables, etc., Misc. Unused Landing Gear, Misc. Dust Collector Bags, Unused Crawler Rollers, Unused Misc. Filters, Qty. of Barrel-Style Highway Safety Markers, Misc. Road Construction Signs, Safety Harness, TWO Flashing Yellow Light Signs, Larger Wood Storage Box, Qty. of Misc. Poly Bulk Containers of Oil & Other Misc. Chemicals, Qty. of 45 Gal. Metal & Plastic Drums, 300 Gal. Fuel Tank on Steel Skids, Pallet of Braces and Steel Sawhorse, Misc. Steel Framing, 500 Gal Fuel Tank, on Steel Stand.

SURVEY EQUIPMENT

EIGHT, **Trimble Direct Reflex DR200+ 5500 Series** Transit, TWO, **Trimble GCS 900** Grade Control System, **Trimble Spectra Precision Laser GL722**, **Topcon TP-L4AV** Pipe Laser, **Topcon TP-L3G** Pipe Laser, THREE, **Sokkia Power Set 4000** Transits, TWO, **Trimble** Remote GPS Stations, THREE, **Sokkia C330** Transits, TWO, **Nikon AX-2S** Transits, **Sokkia C32** Transit, **Nikon AS-2C** Automatic Level, TWO, **Trimble** Bases, **Distomat Wild 011000L** Laser Distance Measuring Tool (not Complete), **Trimble ACU (7)**, **Trimble SNR900**, Plus Misc. Battery Packs, Cables, Back Packs, Measuring Tapes, Porta-Powers, Transit Mounts, Misc. Optima Offsets, Misc. Motorola Handheld VHF Radios, Extra Batteries, Power Supplies, Chargers, Safety Vests, Inverted Marking Paint and Approx 30 Trimble, Crain and Other Tripod Stands.

METALWORKING EQUIPMENT

John Bertram and Sons Gap Bed Engine Lathe w/ 125" x 40 Ft. Bed, 2- Steady Rests, Multi-Jaw Chuck, Tail Stock, 80 Ton Max Load Between Centres (disassembled).

Acklands 230/460/575 Volt AC DC Arc Welder, Mounted on Steel Frame w/ Whls. s/n JJ372476.



Trimble Spectra Precision Laser GL722

Acklands 300 AC/DC/WG/HF Constant Current AC DC Arc Welder Power Source, **Lincoln Ranger 8** Portable Welder p/w Kohler V-Twin 18 HP. Eng., Elec Start w/ Oxyacetylene Gauges, Hoses, etc., Mounted on Steel Frame, TWO, **Miller Bobcat 250** Portable Welding Units p/w Twin Cyl 18 HP. Kohler Eng., 250 Amp, 10,500 Watt Gen Set c/w Oxyacetylene Gauges, Hoses and Large Qty. of Cable, Platform Mounted, Set up for Crane Lift, **Miller Dimension 652** DC Welder w/ Cable, **Plasmarc PCM150** Plasma Cutter on Steel Stand w/ Castor Whls.

WOODWORKING EQUIPMENT

Cancar Chip and Saw w/ Hyd. Set Works w/ Chain Infeed. s/n 3601-27-75.

1998 Thermwood 53CNC Router 460 Volt, 24.9KVA, 3-Phase c/w CNC Controls. s/n C531360398.

Innova Edge LP3000A (s/n 4497301) 600 Volt, 28 Kilowatt, SL-3000A Glue Laminator s/n 0397501.

1990 Biesse Techno 7 Multi Drill 937/90, 7.8 KW, 440 Volt, 110/24 Volt.

Zancheri & Boschetti V295 Boring Machine s/n B49989, 575 Volt.

WALL PANEL LINE

Thermolock Wall Panel Mfg. Line Consisting of the following:

- Component One: Custom Built Panel Board Pre-Heat System.
- Component Two: Custom Built Press Infeed System.
- Component Three: FOUR, Custom Built Panel Mold Units.
- Component Four: 2-Unit Hyd Panel Press Mold Machine, Hyd. Operated.
- Component Five: Pneumatic Polyurethane Insulation Injection Unit.



Innova Edge LP3000A

- Component Six: Elec. Pump Pressurization System & Pneumatic Pump c/w Moeller Controls and DeVilbiss TAPV-5052-3, s/n 39324, Upright Twin Cyl Air Compressor, 3-Phase, 5 HP.
- Component Seven: **Zecs Z-10NCD** Air Dryer s/n 138004-6.
- Component Eight: FOUR, Custom Built Pneumatic Packaging Stations.

MISC. SHOP EQUIPMENT

Atlas Copco GA1208 Screw Compressor, **Edmolift 50"** x16 Ft. Scissor Lift, 6000 Kg. Capacity, Large Qty. of **Almac** Sections of 18"x10' Ft. Roller Conveyor.

Gerrard-Ovalstrapping STR-24-110A Vinyl Strapping Machine.

24 Large Steel I-Beam Temp. Bridge Beams or Scale Mounting Beams.

Qty. of Fabricating Steel to Include: Flat Iron, Pipe, Tubing, Angle Iron of Various Sizes, and Steel Stand, Misc. Scaffolding, Alum. Ext. Ladder,

Rexroth Portable Hyd. Power Pack w/ 5 HP Baldor Motor, Hyd. Press w/ Adj Table, Misc. Steel Stands and Roller Stands, Steel Frame Shelving unit w/ Large Qty. of Misc. Scrap Iron, Shafting, etc., Qty. of Plate Steel Pcs., Misc. Oxyacetylene Gauges, Hoses, etc., Trash Pump Mounted on S/A Carrier w/ 9 HP. Honda Eng., **Honda** 5-1/2 HP. 2" Trash Pump, **Honda** 3" Water Pump, Misc. Slings, Steel Steps, Brooms, Shovels, Steel Stands, etc., HD Steel Welding Table, 1" Plate Top, Misc. Ext. Cord, Vac Cleaner, Steel Rack, Hyd. Power Pack w/ Baldor Elec. Dr., Misc. Pneumatic Clamps, Qty. of Misc. Moulder Blades, Pullies, etc.



1990 Biesse Techno 7

INVENTORY

Qty. of 1/2" and 3/8", 4x8 Ft. Sheets of Gyproc, SEVEN, Lifts of 90 Pcs. each 7/16"x4x8 Ft. OSB Board, SIX, 250 Gal. Palletized Poly Bulk Tanks of VASF Isocyanate and Resin, Partial and Full, Approx TEN Lifts of LVL Board, Approx 75 Lengths per Lift of 1-1/2"x10"x16 Ft., And/Or 90 lengths of 1-1/2"x8"x20 Ft., Approx. 125 Lifts of Asst'd Thicknesses and Sizes of 4x8 Ft. Sheets from 3/8 to 1", some w/ Veneer, TWO Pallets of Rolls of Foil Veneer, Qty. of Misc. Rolls of Pallet Wrap, Qty. of Used and Unused Saw Blades, Large Qty. of Approx 42" Mattresses and Bed Frames, Large Qty. of Hardware Including Butterscotch Buttons, Screws, Shelf Holders, Black Plastic Handles, White Shelf Brackets, Bagged Hardware, Lid Supports, Sliding Wardrobe Hardware, Butterfly Hinges, Knobs, Grommets, etc.

FINISHED GOODS

Approx. 250 lifts (12-Units per lift) of **Thermolok** 4x8 Ft. Interlocking Interior and Exterior Pre-fabricated Wall Panels w/ Gyproc, OSB and MDF Facia.

Qty. of NEW Inbox, Bookshelves, Computer Desks, Audio Video Storage Towers and Sliding Door Wardrobes.

OFFICE EQUIPMENT

Qty. of Misc. Stacking Chairs, Filing (Legal & Lateral) Cabinets, Folding Tables, Office Desks, Credenzas, Office Chairs & Tables, etc.

COMPUTERS & PRINTERS

32 **Dell Optiplex** PC's, 34 **Dell** Notebooks, 7 **Dell Poweredge** Servers, 23 **HP Laserjet** Printers and **HP Designjet 500** Plotter.



Asset Sales (Canada) Inc.

auctioneers * appraisers * liquidators

4310 Prospect Road, Bayside, Nova Scotia, Canada B3Z 1L5

www.asset-sales.ca



HODGINS
AUCTIONEERS INC.



Saskatchewan P.L. #915407 Alberta P.L. #180827

CALGARY • MELFORT • TORONTO

TOLL FREE 1-800-667-2075 • PHONE (306) 752-2075 • FAX (306) 752-5702

WEB: <http://www.hodginsauctioneers.com> • EMAIL: info@hodginsauctioneers.com

4 THURSDAY, NOVEMBER 18th 2010