



DG AUCTION ONLINE ONLY

Unreserved Online Only Auction **SUPREME STEEL LP** (former Carron plant)

STRUCTURAL STEEL FABRICATION - PLANT CLOSING
1168 DERWENT WAY, DELTA, BC V3M 5R1

Bidding Closes: Tuesday, May 12, 2020 @ 8:00 AM PDT

Online bidding via: [BidSpotter.com](https://www.bidspotter.com)

INSPECTION: Monday, May 11, 2020; 9:00 AM to 4:00 PM PDT



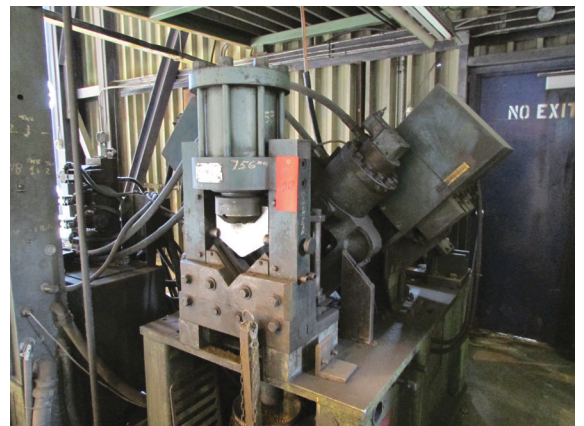
Controlled Automation DRL-344



HE&M Saw WF190LM-DC



3 of 12 OH Cranes



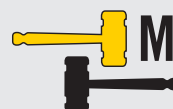
Whitney Anglematic 845D

sale
conducted
by



DG AUCTION
SERVICES
dgauction.ca

in
conjunction
with



MYRON BOWLING
AUCTIONEERS, INC.

www.myronbowling.com

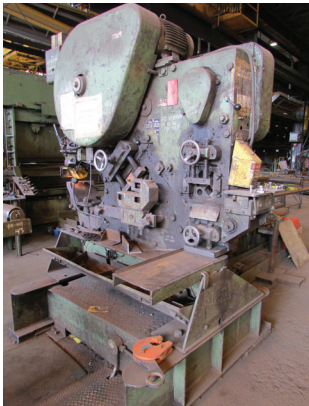
Inspection: Monday, May 11, 2020; 9:00 AM to 4:00 PM PDT



1999 Messer Titan



Welders



Peddinghaus Model 210AD/20



Compustep 6060-12



Foradia Model GK50-1500



2009 DoAll TM-18 22M



Mi-Jack 650B



2005 Kalmar DC140-6



1 of 2 TCM FD100-9



Grove Model RT 522



2001 Skyjack SJ9250



Terex T826

Beam Line

Controlled Automation Model DRL-344 Beam Drilling Machine s/n 07-152 c/w Controlled Automation control

HE&M Saw Model WF190LM-DC Horizontal Bandsaw c/w Cutwatcher control

Whitney Anglematic Model 845D Angle Line s/n 845-561-30530 c/w Anglemax control (machine needs repair)

Fabrication Equipment

1999 Messer Titan Oxy Fuel Cutting Machine (disassembled, no table) s/n Titan12/8LP-99-3799, w/ 16'8" between Rails c/w Messer Navigator control (previous table for unit was 12' x 60')

Elk River Machine Co. Model 150SB10HL Brake/Shear Combo Machine, s/n 200680100, w/ Brake ¼" x 10' and Shear ½" 10' Capacities c/w manual control

Peddinghaus Model 210AD/20 Mechanical Ironworker, s/n GJ090

Peddinghaus Model 210-Super 16 Mechanical Ironworker, s/n 4408954773041

Compustep Model 6060-12 CNC Drill c/w PC control

2009 DoAll Model TM-18 22M Vertical Bandsaw, s/n JWA0109281

Femco Model WRD 75/1600 Radial Arm Drill, s/n 78-6015 (machine needs repair)

Foradia Model GK50-1500 Radial Arm Drill, s/n OBL

Shopbuilt 24" Hyd. Press Brake

Clifton & Baird HD Milling Machine w/ 4' x 4' Tilting Electromagnet and Rail Car Type Feeder

Material Handling

Mi-Jack Model 650B, 40 Ton Gantry Crane, s/n 620947, showing 5,285 hours

2005 Kalmar Model DC140-6, 14 Tonne x 16' Diesel Forklift, s/n T33105.0937

TCM Model FD100-9, 11 Ton x 177" Diesel Forklift, s/n 30M00143, showing 13,500 hours

TCM Model FD100-9, 11 Ton x 177" Diesel Forklift, s/n 30M00209, showing 12,500 hours

Taylor Model Y24 BWO, 12 Ton HD Diesel Forklift, s/n S-36-12350

Grove Model RT 522 Rough Terrain Crane, s/n 42983 (needs repair, fuel problems)

1990 IH Model 4900 S/A Crane Truck, s/n 1HTSDDBR1LH692732 w/ Diesel Eng., 10 Spd., Trans., Air Brakes, , showing 117, 529 kms & 5,531 hours c/w Pitman Model HLJ60D Crane, s/n C22103

Welders & Cutters

60+ Welders including Miller Dimension 652's & 452's, Lincoln DC1000's, DC 655's, DC 600's & Flex Feed Handhelds, Thermal Arc Excelarc 8065's & 2410's, Hobart RCC 650 RVS's & RCC 450 RVS's, Misc. ESAB Welders, plus numerous Miller R-115 Wire Feeders, Lincoln LN 10& LN9 Wire Feeders, Hobart 27A Wire Feeders, Nelson 2000A Stud Welder, etc.

Qty. of Track Cutters

Scissor Lifts

2001 Skyjack Model SJ9250 Gasoline Powered 4WD Scissor Lift, s/n 50890 w/ 1,500 lb cap. x 50' reach

Terex Model T826 Battery Powered Scissor Lift, s/n 27496 w/ 1,000 lb cap. x 26' reach

UpRight Model X31N Battery Powered Scissor Lift, s/n 857A w/ 700 lb cap. x 31' reach

Trucks

1993 Freightliner T/A Truck Tractor, s/n 1FUDSEB99PP419651 w/ DD Series 60 Engine, showing 849,750 km

2005 Chev 2500HD, 2WD, s/n 1GCHC24U85E270090, w/V/8, Auto, showing 364,000 kms

2006 Toyota Tundra, 2WD, s/n 5TBJU321265472859, w/V-6, Auto, showing 285,000 kms

Trailers and Tents

Fruehauf 45' T/A Highboy (for parts)

T/A Car Trailer

2 – 20' x 50' Tent Structures w/ Arch Rib Tube Frame c/w Dolly Wheels

3 Misc. Tent Structures w/ Arch Rib Tube Frame

1 – 30' and 1 – 10' Trailer Type Storage Units (with rooftop crane hooks)

Misc. Seacans and Tool Shacks

Overhead Cranes

Twelve OH Cranes from 5 – 25 ton, from 30' to 100' Spans

Other Cranes

4 – 2 Ton Cantilever, 2 – 7.5 Ton Gantry & 3 – 7.5 Ton Semi Gantry Cranes

Blasting & Painting Equipment

Numerous sand blast pots, Five Grayco Paint Pumps, Eco Model SR30V Paint Treatment Machine

Rigging Equipment

Large quantities of 25-40 Ton spreader beams, 5 Ton to 30 ton HD chain & wire rope slings, 5 Ton to 50 Ton HD shackles, etc.

Inventory

Large quantity of steel inventory including structural steel, WF, angle, HSS, plate, flat bars & channels.

Large quantity of scrap steel.

LARGE QUANTITIES of SHOP EQUIPMENT including hyd. power packs and rams, mag drills, pedestal drills, pneumatic grinders, impacts & chisels, elec. angle grinders, power tools, hand tools, safety equipment, oxy-acetylene torches, gauges & hoses, come-alongs, engine hoists, Bessy clamps, extension cords, welding cable, step platforms, J-hooks, Hilti drills & glue guns, Hilti epoxy anchors, used safety netting, shop fans, Scott air packs, survey transits, turfor jacks, pipe dies, reels of wire rope, beam tongs, jobsite elec. service panels, transformers, pulleys, plate clamps, chain hoists, man baskets, pneumatic winches, misc. size and length I-Beam horses, welding consumables, scaffolding, rail transfer cars.



ONLINE BIDDING: YOU MUST REGISTER IN ADVANCE FOR ONLINE BIDDING AT THIS AUCTION www.bidspotter.com

BidSpotter.com



**STRUCTURAL STEEL
FABRICATION - PLANT
CLOSING AUCTION**



**Bidding Closes: Tuesday, May 12, 2020
@ 8:00 AM PDT**

Online bidding via: www.bidspotter.com



**INSPECTION: Monday, May 11, 2020;
9:00 AM to 4:00 PM PDT**



1291 Grand Ave.
Buena Vista, SK
Canada S2V 1A4

PRINTED IN CANADA



**DG AUCTION
ONLINE ONLY**



2006 Toyota Tundra



2 - 20' x 50' Tent Structures

**ONLINE BIDDING:
YOU MUST REGISTER IN ADVANCE FOR ONLINE
BIDDING AT THIS AUCTION**
www.bidspotter.com

**BIDDING Begins Closing:
Tuesday, May 12, 2020 @ 8:00 AM PDT**

18% BUYER'S PREMIUM

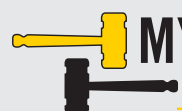
For More Information & Complete Terms & Conditions go to: www.dgauction.ca or www.myronbowling.com

sale
conducted
by



**DG AUCTION
SERVICES**
dgauction.ca

in
conjunction
with



**MYRON BOWLING
AUCTIONEERS, INC.**

www.myronbowling.com